

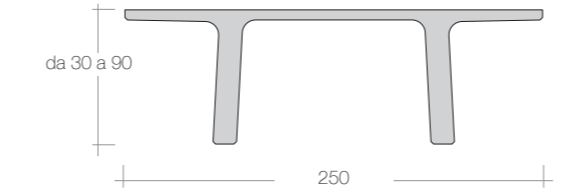
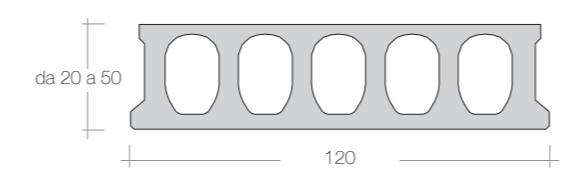


### Sistemi pluripiano

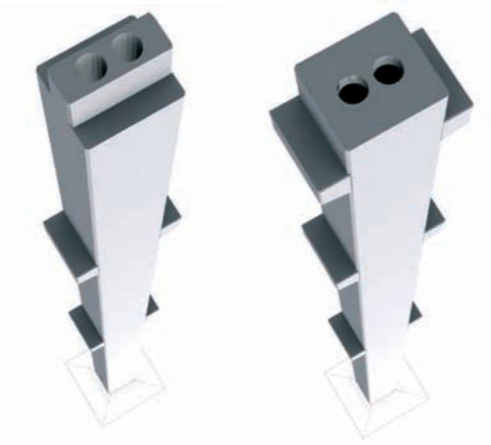
Alveolare



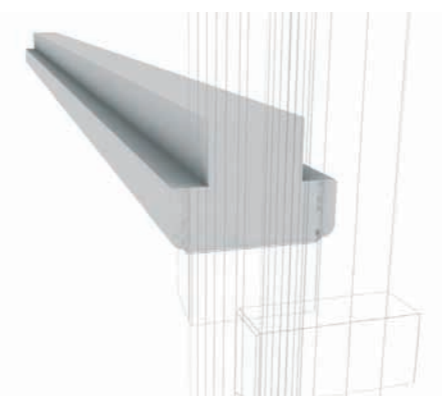
Pigreco



### Elementi strutturali



PILASTRO IN CAV  
Sez. 40x54 54x54 54x80



TRAVE SOLAIO  
Sez. h 35/45/55/60/70



FIM S.p.A.  
52040 Loc. Mantagnano 38/A - Monte San Savino (Ar)  
tel.0575.848455 - fax 0575.848356  
www.fim-spa.it - info@fim-spa.it

adella marini



Più livelli per più esigenze



